

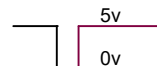
**CHASSIS GROUND**  
(Black)

**SHIELD**  
**SIGNAL**  
(Clear)

**SIGNAL CABLE(S) FROM THE KNOCK SENSOR**

**WIRE ENTRY DIRECTION**

**Logic signal for timing retard** (Color not specified)



**NOT USED**

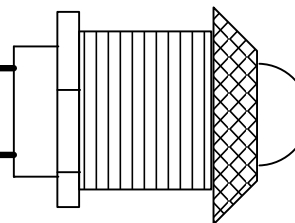
**LED MINUS**  
(Gray)

**LED PLUS**  
(Yellow)

**+12V POWER**  
(Red)

**LED PLUS**  
(Yellow)

**LED MINUS**  
(Gray)



**HOOKUP - GENERAL**

To attach a wire to the terminal block insert flat end of the tool provided or a SMALL (.09") flat screwdriver in the slot above the entry and lift up. The wire entry will open. Insert the wire and release the tool.

**INSTALLATION**

Instal the unit under the dash, never in the engine compartment. Leave the lid off until it is set up. It is light enough to be tied to the harness afterwards.

**SETUP**

With engine at idle rotate the blue sensitivity knob CCW until the LED just comes on. You may need to blip the throttle. Rotate CW about 15 to 20 degrees. The LED will be out but will flash if the knock is detected. You can trim the sensitivity to your preference.

**Signal in Connection**

- 1 If supplied bolt the knock sensor the suitable place on the block and torque to 10 to 15 ft-lb
2. Plug in the signal cable and route the shortest path to KnocksenseMS. Avoid ignition cables.
3. Else wire the supplied signal cable directly to the knock signal cable in the harness. Center conductor to center conductor and shield to shield.
4. Trim off the excess cable and connect to KnocksenseMS. Make sure that the braid strands do not short out the signal.

**Signal out Connections**

MegaLogViewer can display the action on knock events the MS took in degrees of timing retard. This is the preferred method of logging knock events.

For testing purposes KnocksenseMS can be powered with a 9V battery.

**Do not connect the LED directly to 12V or any other battery. It will burn out instantly if you do. The current limiting resistor for the LED is in the Knocksense unit.**

<b>VIATRACK</b> <b>WWW.VIATRACK.CA</b>		
Title KNOCKSENSEMS MS&S EXTRA WIRING MSII-V3, MS3X		
Size A	Document Number 200206	Rev 2.0
Date: Friday, March 20, 2026	Sheet 3	of 3